



company:: *n.* a body or person assembled for a common purpose.



Saltash Enterprises Ltd

Formed in 1986, Saltash still retains the dedicated work ethic formed by Director, Richard Raymond.

Saltash is a specialist contractor who predominantly serves:

- National Heritage Properties
- Government Agencies
- Local Authorities
- Education Departments
- Social Housing Landlords
- The Private Sector



The contract services which Saltash provide are:

- | | | |
|--------------------------------------|----|----|
| ● Refurbishment/Conversion | 48 | 30 |
| ● New Build | | |
| ● Responsive Repairs and Maintenance | 39 | |
| ● Aids and Adaptions | | |

Strategically based at a central south London location, our experienced direct labour force is distributed across London and the home counties.

Directly employed/in-house staff:

- | | |
|--|---|
| <ul style="list-style-type: none"> ● Senior Construction Management ● Site Management ● H&S Management ● Design Team ● Scaffolding Team | <ul style="list-style-type: none"> ● Brickwork/Blockwork Team ● Carpentry ● Wall & Ceiling Finishes ● Decorations |
|--|---|

structure:: *n.* the way a thing is constructed or organised.



REFURBISHMENT



Saltash has been actively involved in a number of initiatives with social landlords to improve their housing stock by converting, repairing and refurbishing.

Our refurbishment projects are diverse, from an aesthetic refinish, a conversion of hidden spaces or a comprehensive restoration of a listed building; keeping our standards across the range.

Each project is guided by senior managers, teams of in-house craftspeople and specialist subcontractors who can tackle any scope of refurbishment work; our teams are encouraged to learn new techniques and technologies to then blend these with existing traditional craftsmanship.

Services also provided:

- **Kitchen and bathroom renewal**
- **Window renewal & replacement**
- **Fire door and sprinkler system installation**
- **Roofing and remedial work to community**



Contracts are supported by a comprehensive supply chain management planning policies. These policies and procedures effectively contribute to the successful outcomes that create client satisfaction ensuring that their objectives are met at all times.



build:: construct by putting parts or material together.

NEW BUILD



SALTASH



Since Saltash entered the arena in 1986, the construction industry has diversified significantly. However, our ability to deliver high quality construction solutions remains the key characteristic of our service.

By combining the latest, proven technologies with traditional building skills, Saltash is able to provide its 21st century methods and standards to a broad range of new build contracts.



To ensure the 'buildability' of a project, we perform a comprehensive customised value engineering exercise on all proposed contracts. This shows whether or not any initiative will bring worthwhile benefits before major costs are incurred.



Services also provided:

- **Demolition**
- **Design and build services**
- **Extensive refurbishments**
- **Conversions**

management: *n.* the administration of business concerns or public undertakings.

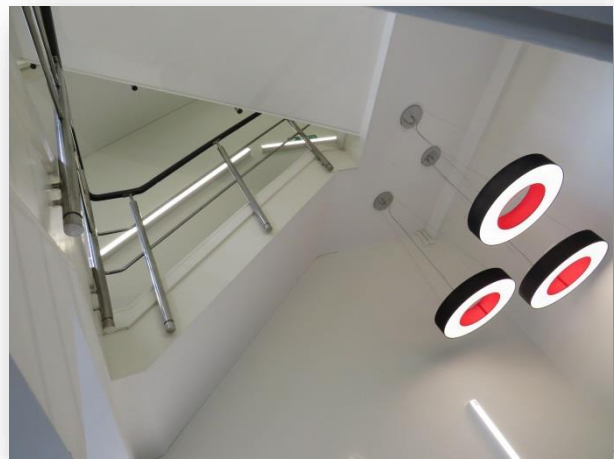


REPAIRS & MAINTENANCE



Saltash understand the importance of responsive repair services being efficient and timely.

Having a long history of successful repair contracts with local authorities and historical structures, Saltash have developed innovative approaches and service levels for this category of work which are rarely challenged.



54



Our philosophy is that the clients' satisfaction levels dictate the benchmarks of our performance. In addition to the quality of the repairs, we monitor the following factors on all key contracts:

- **Response times**
- **Quality of work**
- **Politeness and consideration**

Saltash uses CDM technology to monitor and plan for substantial bottom line cost savings to clients which benefits operatives with a fast and modern administration system.



care:: *n.* serious attention and thought; protection.



AIDS & ADAPTATIONS



The process of installing facilities to meet the demands of disabled, aged and other vulnerable members of society requires a high degree of understanding, sympathetic planning and considerate implementation.

Our Disabled Aids and Adaptions Division covers:

- **Remodeling properties including extensions and ensuite bathrooms**
- **Level access shower formations**
- **Ramp installations**
- **Stair lifts**
- **Handrails and many other specialist adaptions**



Saltash offers lengthy experience in the aids and adaptions field retaining numerous contracts with local authorities and housing associations. It is this element that strongly supports our claim to be one of the outstanding contractors in the South East of England for this type of specialist, sensitive work.

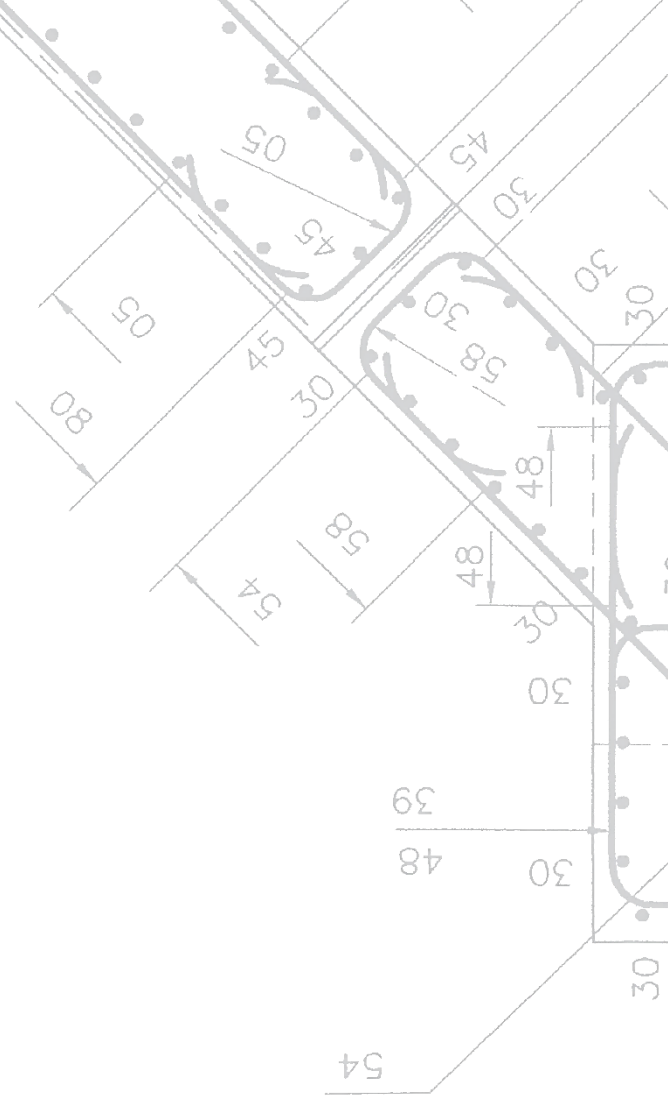
Typical locations for adaptations are:

- **Day centers**
- **Public buildings**
- **Schools**

- **Residential homes**
- **Private dwellings**



SALTASH



WANT TO CONTACT US?

SALTASH ENTERPRISES LTD
110-116 Ormside Street
London
SE15 1TF

T: 0207 277 5661

E: enquiries@saltashconstruction.co.uk

W: www.saltashconstruction.co.uk

